

← ARCHED OPENING FILLED WITH MDO PLYWOOD WITH MUNTIN PATTERN SHOWN EITHER APPLIED AS TRIM OR PAINTED (LIGHT TRIM COLOR WITH DARKER TRIM COLOR OUTLINE)

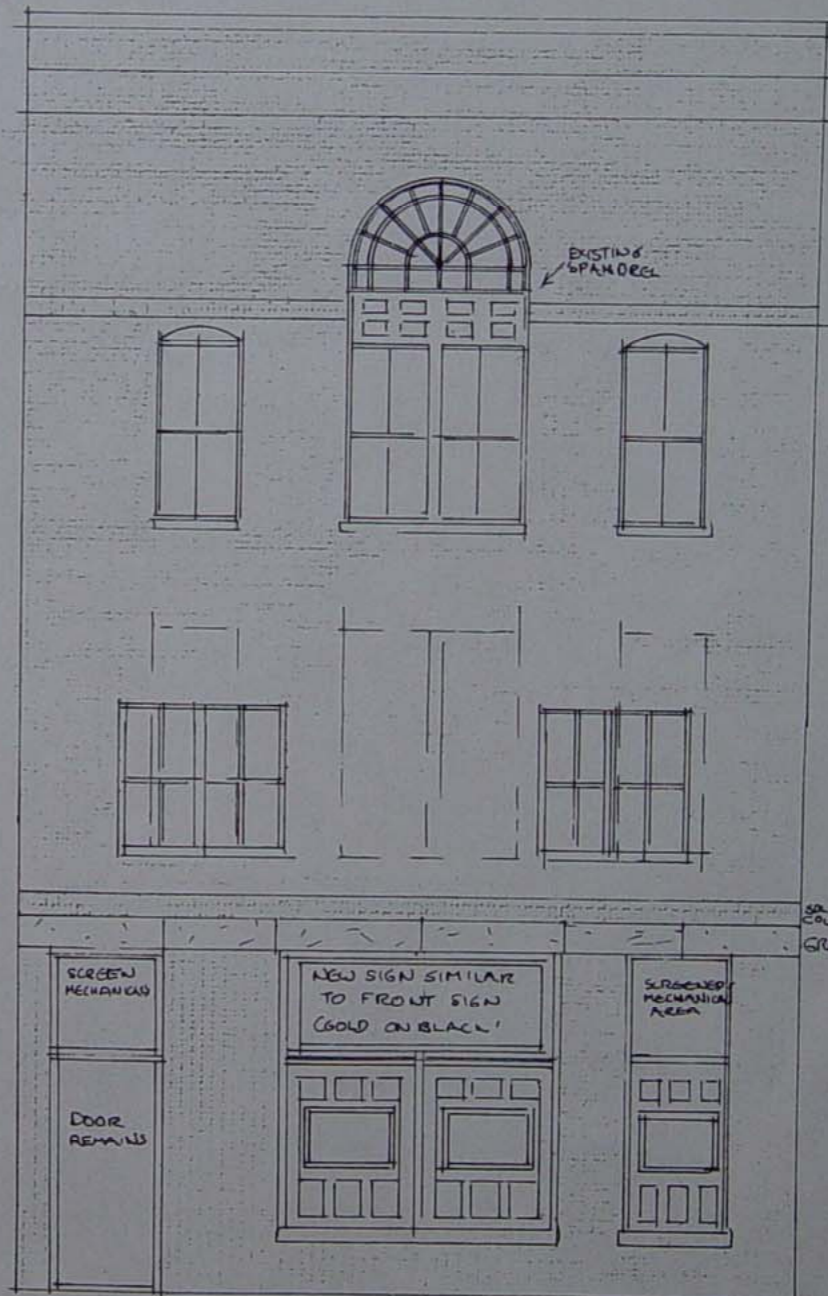
IDEAL SOLUTION TO SECOND FLOOR WOULD BE TO RESTORE ORIGINAL WINDOWS. MINIMUM IMPROVEMENT IS TO ADD VERTICAL MUNTIN BARS TO EACH SASH TO REINFORCE VERTICAL PROPORTIONS OF WINDOW OPENINGS →

REAR FACADE: REMOVE STUCCO, EXPOSE ORIGINAL BRICK. UPPER PART OF OPENINGS BLOCKED FOR SIGN & FOR SCREENED MECHANICALS (VENTS, ALARMS, ETC.). LOWER PART OF WINDOW OPENINGS FILLED WITH RAISED PANELING LIKE THAT OF SPANDREL ABOVE THIRD FLOOR WINDOWS. "SHADOW BOX" DISPLAY WINDOWS MAY BE INCORPORATED AS SHOWN. →

EXPOSE BRICK PIER

← EXPOSE BRICK PIER

WATER STREET



EXISTING SPANDREL

SOLID COURSE GRANITE

SCREEN MECHANICALS

NEW SIGN SIMILAR TO FRONT SIGN (GOLD ON BLACK)

SCREENED MECHANICAL AREA


DOOR REMAINS

RUSSELL STREET

NOTE: IF FIRE ESCAPE IS NO LONGER FUNCTIONAL, REMOVE & PATCH WALLS LONG-TERM FUTURE OF UPSTAIRS PROBABLY WILL REQUIRE NEW EXIT STAIRS INSIDE

SCALE 1/4" = 1'-0" ±  
NOTE: ALL DIMENSIONS ARE APPROXIMATE; CONFIRM AT SITE

83-27-

PROPOSED REMODELING  
 RUSSAKOFF JEWELERS  
 WATER STREET SKOWHEGAN  
  
 CHRISTOPHER GLASS, ARCHITECT  
 38 CHESTNUT ST., CAMDEN, MAINE 04843 207-238-8515  
 3/17/83

6 8:32 AM